



FOUR PIECE 84-INCH FLUSH MOUNT RAIL KIT

Save Time and Money

Low-cost rail-based PV module mounting system provides easy installation, simple wire management, great strength and economical shipping



- Kit contains all parts required to mount 8 typical 60-cell or 72-cell modules*
- Use with any roof attachment that can accommodate a 5/16-inch bolt
- Kit can be shipped by UPS
- Cables can be run inside rails to keep them off the roof

* Module clamps fit any module with frame thickness of 30mm to 40mm



Best Wire Management - PV cables and wiring for module-level electronics fits inside rails to avoid time consuming wire management.



Use Any Roof Attachments - Our rails mount to QuickBolt, QuickMount, FlashFoot, S-5 or any roof attachment that can be used with a 5/16 inch bolt.



One Wrench Size - Install with ease and minimal tools. A 1/2-inch socket fits all fasteners.



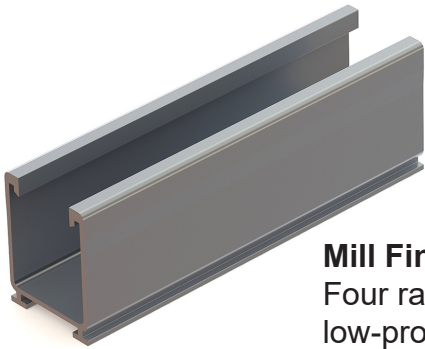
UL 2703 Listed - All components meet the UL standards and have a Class A Fire Rating for Type 1 and 2 modules.



PE Certified - Pre-stamped engineering letters available for most states.

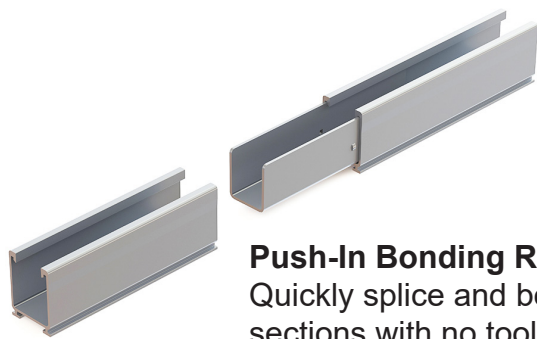
Tamarack Flush Mount 84-inch Rail Kit

Install Eight Typical PV modules*



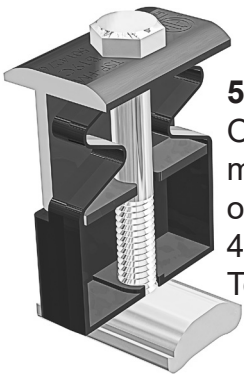
Mill Finish Rails

Four rails for attractive low-profile mounting of up to eight modules with four-foot roof attachment spacing. Certified for up to 180 MPH wind speed and 20 PSF snow load.



Push-In Bonding Rail Splice

Quickly splice and bond rail sections with no tools or fasteners. Top Clamps and Rail Mounts can be co-located with splice. Four splices included.



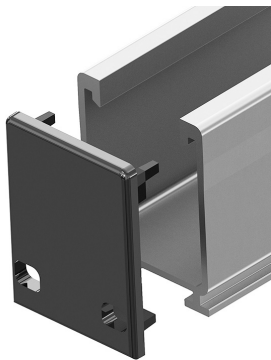
50-50 Clamp

One clamp can be used as a mid-clamp or an end-clamp on modules with 30 mm to 40 mm frame height. Ten clamps are included.



Rail Mount and L-Foot

Quickly and securely mount the rail from either side, to any L-Foot, Tile Hook or specialty flashing with a hole or slot for a 5/16-inch bolt. Eight mounts are included.



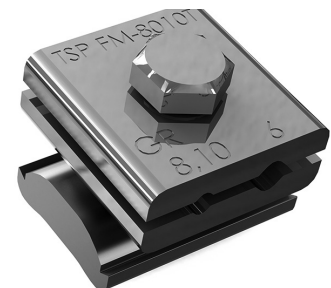
Push-On End Cap

Four caps, for two rows give the rail system a finished look while allowing drainage.



Wire Management Clip

Kit includes 12 clips that can be pushed into top of rail to keep cables in place.

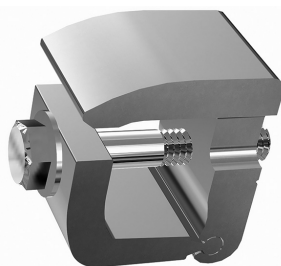


Ground lug

Use one per module row to ground rail with bare 6 to 10 AWG copper wire. Four clamps are included.

Channel End Clamp

This end clamp replaces the 50/50 clamp at the end of the row of modules for better aesthetics. It is your choice which part to use. Four clamps are included.



MLPE Adapter

Use this adapter for mounting microinverters and optimizers on the rails under the modules. Use one adapter for each device. Four adapters are included.

